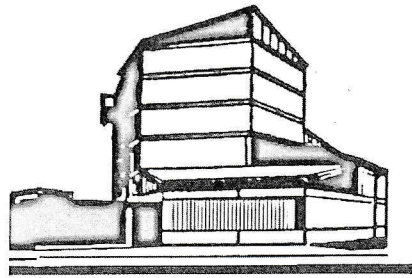


**ST MATTHEW'S CHURCH CENTRE
PERRY BEECHES, BIRMINGHAM**



9 July 2017

Dear Friend

EMERGENCY APPEAL FOR THE CHURCH HALL

We are writing to all members of the Parish community, to ask you to contribute to solving an urgent problem: we need to replace the heating pipes in the hall, before the heating is required again in the autumn.

About a month ago, we noticed that the parquet floor was coming up in one corner, as a result of a leak from the pipes. The floor repair will be paid for by our insurance. But the pipes, which are original to the building, are reaching the end of their life – and we are responsible for the pipes. To patch them up would only be a temporary solution, whereas new pipes and radiators will be more efficient and ultimately save us money.

The cost will be several thousand pounds, and we hope to raise a good part of this from grants. But to achieve this we need to show that we are contributing ourselves. To raise the first £1000 from local donors would greatly strengthen our funding applications. The fund already stands at £400 (TBC).

Would you please give something? Some may only be able to manage a small amount, but remember every little helps. Please put your donation in the enclosed envelope, and put it in the collection this month. If you are a taxpayer eligible for *gift aid* please complete the form and enclose it.

The way the hall is used by so many community groups is an essential part of what we do. So thank you, in anticipation, for playing your part in this local witness, outreach and service.

With best wishes for a blessed and happy summer

Vicar & Churchwardens